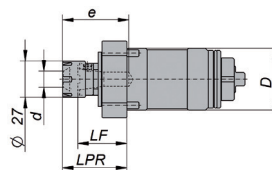


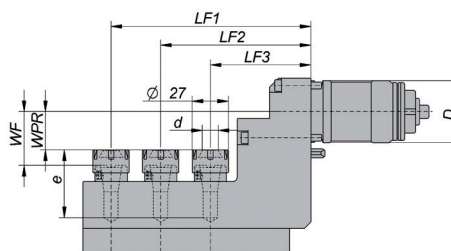
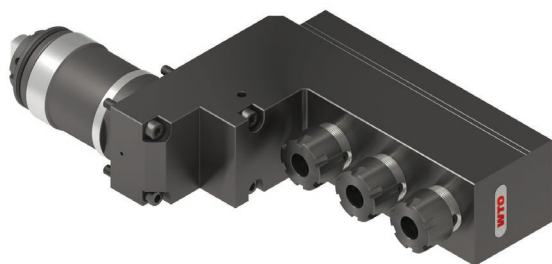
Cross drill/milling unit



Item No.	Machine Interface		Tool Interface	Dimensions/technical data							
	D	Machine(s)		Drive	d	LPR	LF	e	n max. [rpm]	M [Nm]	i n1:n2
NF16-DNE-TS46A-048-E-A	46	B0265-II/266-II B0325-II/326-II/385 SS20/26/32	DIN1809	ER-16NF	0.5-10	48	36.5	49.5	8000	13	1:1
NF16-DNE-TS35A-067-E-A	35	S205A/206A	DIN1809	ER-16NF	0.5-10	67.5	56	55	8000	13	1:1

Dimensions in mm. Including clamping nut and plug screw ER-16NF.

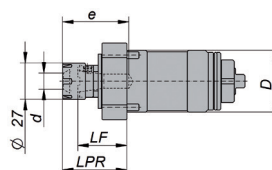
3-spindle Face drill/milling unit



Item No.	Machine Interface		Tool Interface	Dimensions/technical data										
	D	Machine(s)		Drive	d	LF1	LF2	LF3	WPR	WF	e	n max. [rpm]	M [Nm]	i n1:n2
NF16-DNI-TS46A-075-E-X3-A	46	B0265-II/266-II B0325-II/326-II/385 SS20/26/32	DIN1809	ER-16NF	0.5-10	149	112	75	28.5	40.0	50.5	8000	13	1:1
NF16-DNI-TS35A-076-E-X3-A	35	S205A/206A	DIN1809	ER-16NF	0.5-10	138.5	107.5	76.5	17.0	28.5	50.5	8000	5	1:1

Dimensions in mm. Including clamping nut and plug screw ER-16NF.

Face drill/milling unit for sub spindle



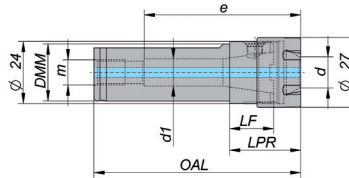
Item No.	Machine Interface		Tool Interface	Dimensions/technical data							
	D	Machine(s)		Drive	d	LPR	LF	e	n max. [rpm]	M [Nm]	i n1:n2
NF16-DNE-TS42A-043-E-A	42	B0266-II/326-II	DIN1809	ER-16NF	0.5-10	43	31.5	58	8000	13	1:1




Dimensions in mm. Including clamping nut and plug screw ER-16NF.

Cylindrical shank holder

with cylindrical shank and flat.

For flexible use of ER collets and nanoFlex® adapters in boring bar and sleeve holders.



Item No.	DMM	d min.	d max.	LF	LPR	OAL	d ₁	m	e			
ER-16NF NF16-SSH-025-A	25	0,5	10	17	28,5	78,5	10,5	G1/8"	60,5	NF16-SCN-A	107520005	NF16-SPL-A

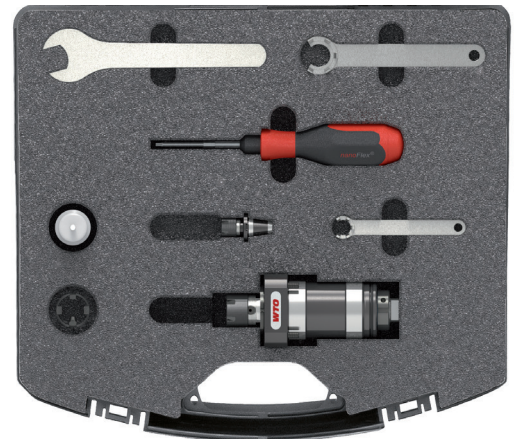
Dimensions in mm. Including clamping nut and plug screw ER-16NF.

Starter Set

NF16-DNE-TS46A-048-E-SK-A

Includes:

- 1 NF16-DNE-TS46A-048-E-A Cross drill/milling unit
- 1 NF16-SAD-ER11-A Collet chuck adapter with ER11M
- 1 NF16-SDR-A Drive ring (incl. NF16 Clamping screw)
- 1 NF16-STW-A Torque screwdriver
- 1 107516002 Spanner wrench SW19
- 1 107520005 Spanner wrench ER-16NF
- 1 107511005 Spanner wrench ER11M



Starter Set

NF16-DNE-TS35A-067-E-SK-A

Includes:

- 1 NF16-DNE-TS35A-067-E-A Cross drill/milling unit
- 1 NF16-SAD-ER11-A Collet chuck adapter with ER11M
- 1 NF16-SDR-A Drive ring (incl. NF16 Clamping screw)
- 1 NF16-STW-A Torque screwdriver
- 1 107516002 Spanner wrench SW19
- 1 107520005 Spanner wrench ER-16NF
- 1 107511005 Spanner wrench ER11M

